

/LEGEND

LANDUSE - ECONOMIC ACTIVITIES - CULTURAL HERITAGE (within flood zone)

- / HOSPITAL** (Icon)
- CLINICS-HEALTH UNITS** (Icon)
- / EDUCATION** (Icon)
- FACILITIES** (Icon)
- / CULTURAL HERITAGE MONUMENTS** (Icon)
- CIVIL PROTECTION FACILITIES** (Icon)
- LIVESTOCK HOLDINGS** (Icon)
- / ENERGY STATIONS:**
 - / SMALL HYDROPOWER STATIONS (SHP)** (Icon)
 - WATER SUPPLY BOREHOLES-WATER SOURCES** (Icon)
- WASTE WATER TREATMENT PLANT**
 - <10,000 (Icon)
 - 10,000-100,000 (Icon)
 - >100,000 (Icon)
- / INDUSTRIES**
 - IPPC (Icon)
 - SEVESO (Icon)
 - IED (Icon)
 - OTHER UNITS (Icon)
- INDICATIVE AFFECTED POPULATION**
 - < 500 (Icon)
 - 500 - 2000 (Icon)
 - > 2000 (Icon)
- PROTECTED AREAS OF 2000/60/EC DIRECTIVE**
 - SC: IMPORTANCE (Icon)
 - SPA: AREAS (Icon)
 - SCISPA: (Icon)
 - SITE OF COMMUNITY IMPORTANCE AND SPECIAL PROTECTION AREAS (Icon)
 - SPECIAL PROTECTION AS RECREATIONAL WATER (Icon)
 - WATER SYSTEMS IDENTIFIED (Icon)
- HERITANCE SITES** (Icon)
- INDUSTRIAL SITES** (Icon)
- / LANDFILL** (Icon)
- AREAS / DEVELOPED TOURIST** (Icon)
- AREAS / DEVELOPING TOURIST** (Icon)
- / RICE CROP** (Icon)
- / GREEN HOUSES** (Icon)
- CROPS** (Icon)
- PORT** (Icon)
- FLOOD ZONE T=1000 YEARS** (Icon)
- AIRPORT** (Icon)

BOUNDARIES OF NEIGHBORING STATES

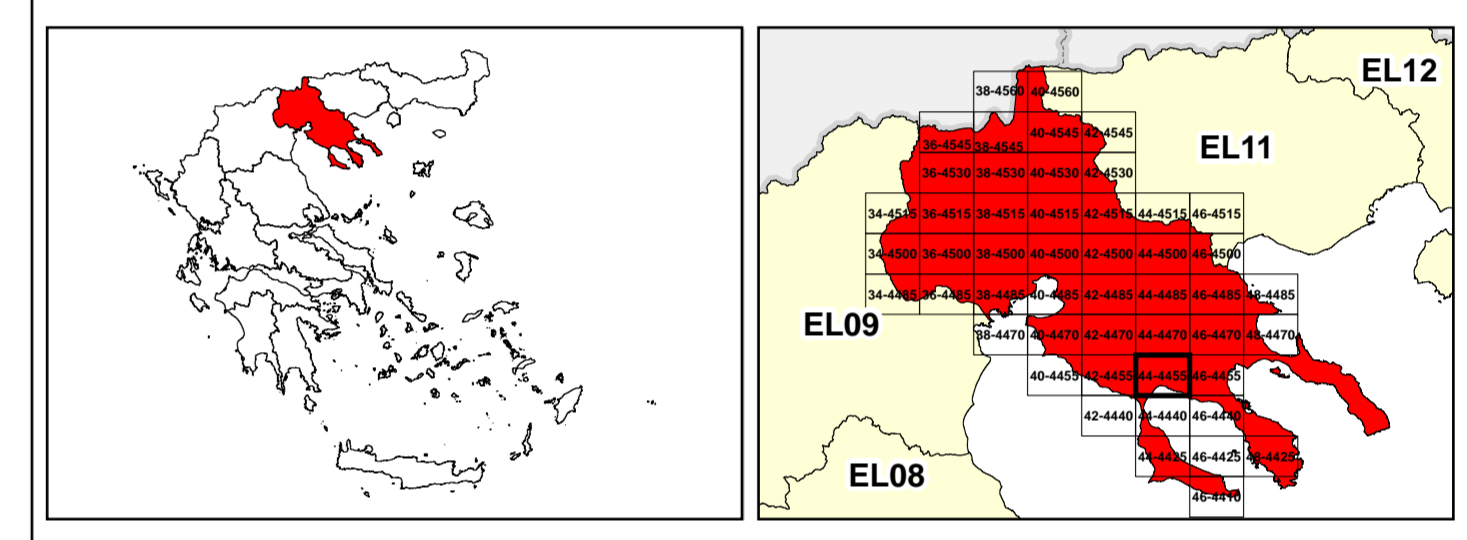
- RIVER BASIN DISTRICT EL10 (Icon)
- OTHER RIVER BASIN DISTRICTS (Icon)
- APSF (Icon)
- STREAMS (Icon)

ROAD NETWORK

- MAJOR NATIONAL ROAD NETWORK (Icon)
- SECONDARY-TERTIARY NATIONAL ROAD NETWORK (Icon)
- MAJOR PROVINCIAL ROAD NETWORK (Icon)
- SECONDARY-TERTIARY PROVINCIAL ROAD NETWORK (Icon)
- RAILWAY LINE (Icon)

0 2.500 5.000 km
GGRS 87 QUADRATURE PER 2.500 M.

2022
24W, (2) 6.293.901m (1) 83.964.120m



&

1

μ μ (EL10)

1° - 7

=1000 - EL10APSF003 & EL10APSF009

FLUVIAL FLOOD RISK MAP FOR RETURN PERIOD =1000 YEARS - APSFR EL10APSF003 & EL10APSF009

EL10-07-FRSK-01K-025-44-4455-02	1:25.000
23-12-2023	2.0

/ &

NERCO -