



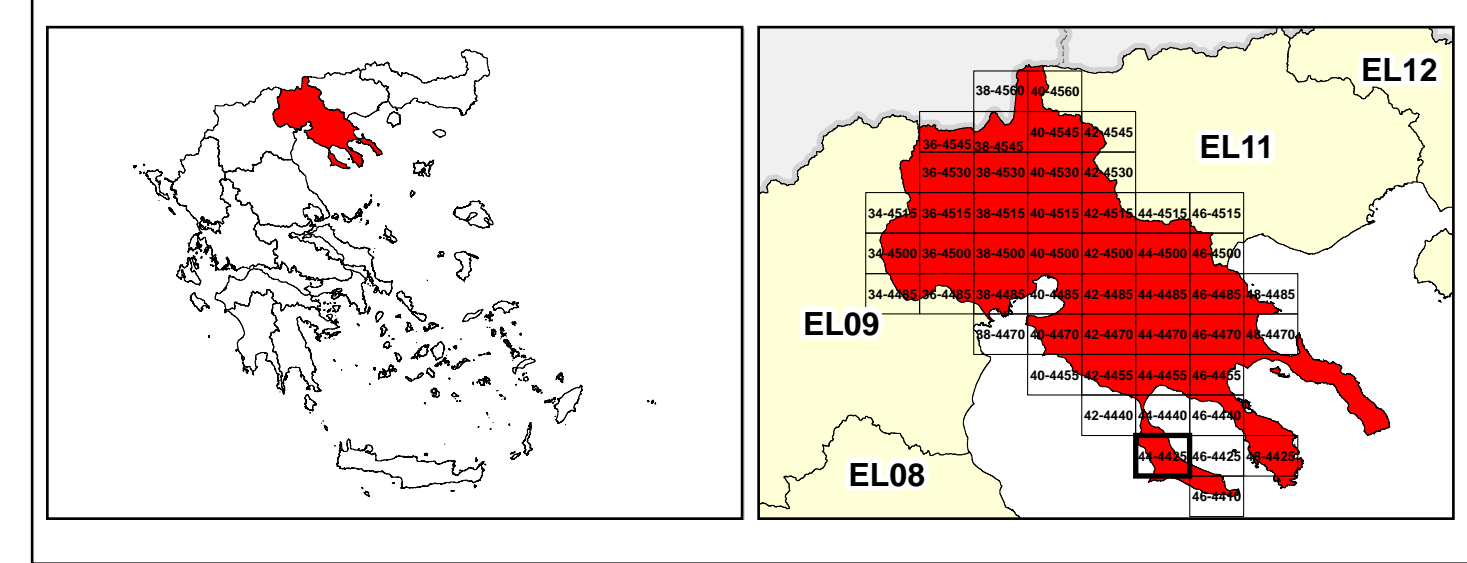
LEGEND

LANDUSE - ECONOMIC ACTIVITIES - CULTURAL HERITAGE (within flood zone)

- HOSPITAL
- CLINICS-HEALTH UNITS
- EDUCATION
- FACILITIES
- SPORT
- CULTURAL HERITAGE MONUMENTS
- CIVIL PROTECTION FACILITIES
- LIVESTOCK HOLDINGS
- ENERGY STATIONS
- SMALL HYDROPOWER STATIONS (SHPP)
- WATER SUPPLY BOREHOLES-WATER SOURCES
- WASTE WATER TREATMENT PLANT
- INDUSTRIES
- INDICATIVE AFFECTED POPULATION
- PROTECTED AREAS OF 2000/60/EC DIRECTIVE
- SC: IMPORTANCE
- SPA: AREAS
- HERITANCE SITES
- INDUSTRIAL SITES
- LANDFILL
- AREAS / DEVELOPED TOURIST
- AREAS / DEVELOPING TOURIST
- AREAS / RICE CROP
- GREEN HOUSES
- CROPS
- PORT
- FLOOD ZONE T=1000 YEARS
- ROAD NETWORK
- MAJOR NATIONAL ROAD NETWORK
- SECONDARY - TERTIARY NATIONAL ROAD NETWORK
- MAJOR PROVINCIAL ROAD NETWORK
- SECONDARY-TERTIARY PROVINCIAL ROAD NETWORK
- RAILWAY LINE

Scale: 0 2,500 M. GGRS 87 QUADRATURE PER 2.500 M.

Coordinates: 442500, 443500, 444500, 445500, 446500, 447500, 448500, 449500, 450500, 451500, 452500, 453500, 454500, 455500, 456500, 457500



Logo of the Ministry of Environment, Energy and Climate Change of Greece.

1

μ μ (EL10)

1° - 7

=1000 - EL10APSR001 & EL10APSR003

FLUVIAL FLOOD RISK MAP FOR RETURN PERIOD =1000 YEARS - APSFR EL10APSR001 & EL10APSR003

EL10-07-FRSK-01K-025-44-4425-02	1:25.000
23-12-2023	2.0

NERCO

Logo of the European Union.

Logo of the Ministry of Environment, Energy and Climate Change of Greece (ΕΣΠΑ 2014-2020).