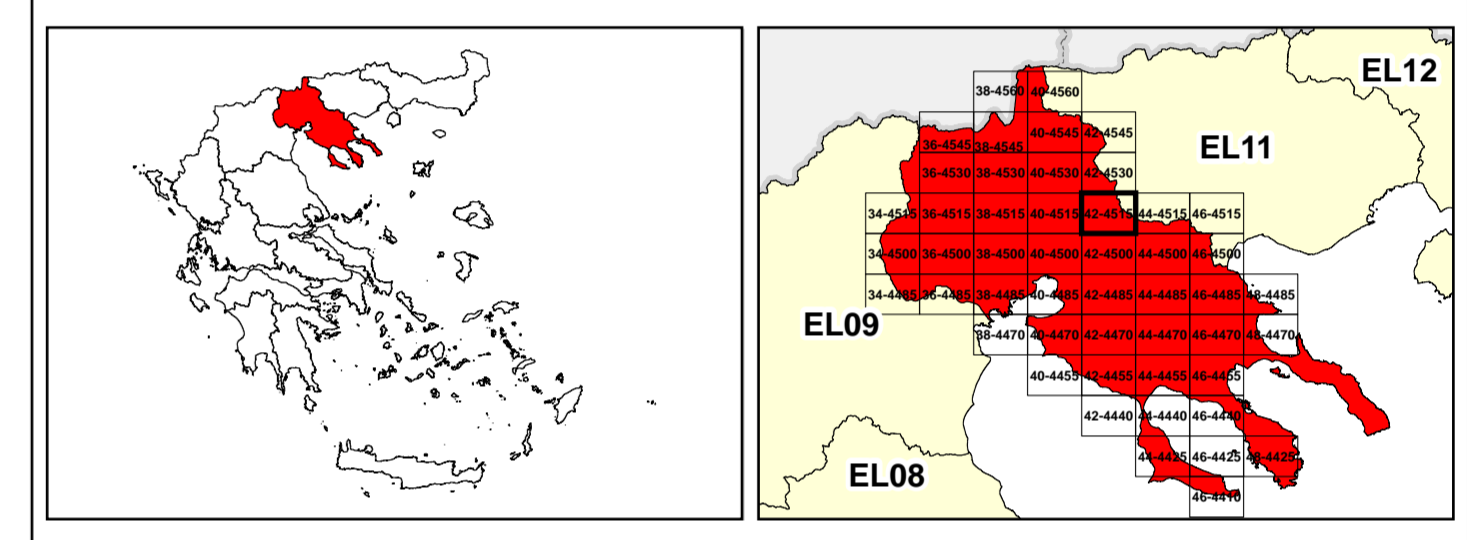


/LEGEND

LANDUSE - ECONOMIC ACTIVITIES - CULTURAL HERITAGE (within flood zone)

- / HOSPITAL** (Symbol)
- CLINICS-HEALTH UNITS** (Symbol)
- / EDUCATION** (Symbol)
- FACILITIES** (Symbol)
- / CULTURAL HERITAGE MONUMENTS** (Symbol)
- CIVIL PROTECTION FACILITIES** (Symbol)
- LIVESTOCK HOLDINGS** (Symbol)
- / ENERGY STATIONS- STATIONS (SHP)** (Symbol)
- WATER SUPPLY BOREHOLES- WATER SOURCES** (Symbol)
- WASTE WATER TREATMENT PLANT** (Symbol)
- / INDUSTRIES** (Symbol)
- IPPC** (Symbol)
- SEVESO** (Symbol)
- IED** (Symbol)
- OTHER UNITS** (Symbol)
- INDICATIVE AFFECTED POPULATION** (Symbol)
- PROTECTED AREAS OF 2000/60/EC DIRECTIVE** (Symbol)
- SC: IMPORTANCE** (Symbol)
- SPA: AREAS** (Symbol)
- HERITAGE SITES** (Symbol)
- INDUSTRIAL SITES** (Symbol)
- / LANDFILL** (Symbol)
- AREAS / DEVELOPED TOURIST** (Symbol)
- AREAS / DEVELOPING TOURIST** (Symbol)
- / RICE CROP** (Symbol)
- / GREEN HOUSES** (Symbol)
- CROPS** (Symbol)
- PORT** (Symbol)
- FLOOD ZONE T=1000 YEARS** (Symbol)
- SCISPA: / SITE OF COMMUNITY IMPORTANCE AND SPECIAL PROTECTION AREAS** (Symbol)
- / SPECIAL PROTECTION AS RECREATIONAL WATER** (Symbol)
- BOUNDARIES OF NEIGHBORING STATES** (Symbol)
- RIVER BASIN DISTRICT EL10** (Symbol)
- OTHER RIVER BASIN DISTRICTS** (Symbol)
- / APSFR** (Symbol)
- / STREAMS** (Symbol)
- ROAD NETWORK** (Symbol)
- MAJOR NATIONAL ROAD NETWORK** (Symbol)
- / SECONDARY - TERTIARY NATIONAL ROAD NETWORK** (Symbol)
- MAJOR PROVINCIAL ROAD NETWORK** (Symbol)
- / SECONDARY-TERTIARY PROVINCIAL ROAD NETWORK** (Symbol)
- / RAILWAY LINE** (Symbol)

Scale: 0 1km 2.500 M. GGRS 87 QUADRATURE PER 2.500 M.



Logo of the Ministry of Environment, Energy and Climate Change of Greece.

1

μ μ (EL10)

1° - 7

=1000 - EL10APSR006 & EL10APSR008

FLUVIAL FLOOD RISK MAP FOR RETURN PERIOD =1000 YEARS - APSFR EL10APSR006 & EL10APSR008

EL10-07-FRSK-01K-025-42-4515-02	1:25.000
---------------------------------	----------

23-12-2023	2.0
------------	-----

NERCO

Logo of the European Union.

Logo of the Ministry of Environment, Energy and Climate Change of Greece (ΕΣΠΑ 2014-2020).