

/LEGEND

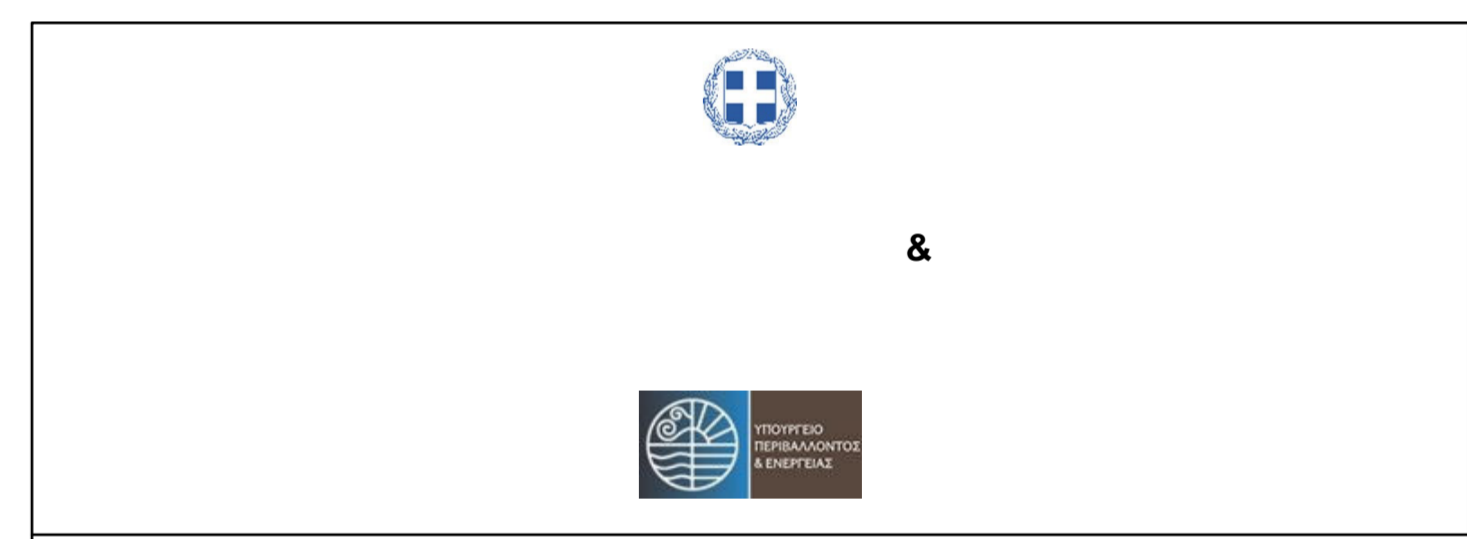
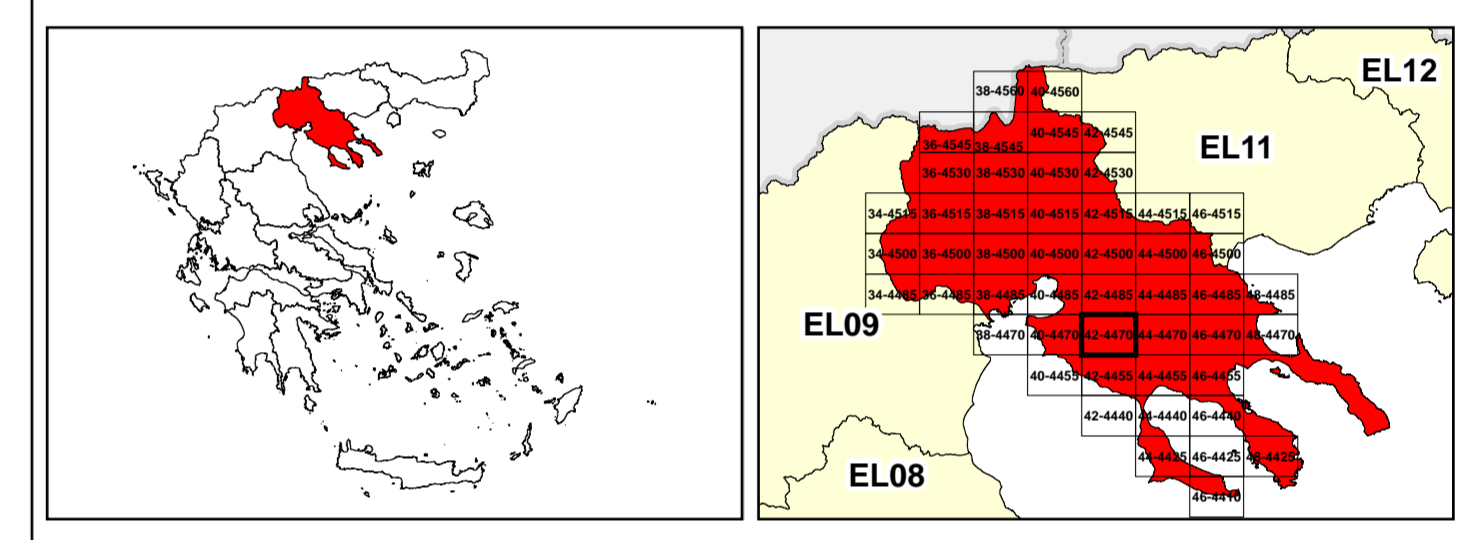
LANDUSE - ECONOMIC ACTIVITIES - CULTURAL HERITAGE (within flood zone)

- WASTE WATER TREATMENT PLANT**
 - <10,000
 - 10,000-100,000
 - >100,000
- INDUSTRIES**
 - IPPC
 - SEVESO
 - IED
 - OTHER UNITS
- INDICATIVE AFFECTED POPULATION**
 - < 500
 - 500 - 2000
 - > 2000
- PROTECTED AREAS OF 2000/60/EC DIRECTIVE**
 - SIC: IMPORTANCE
 - SPA: AREAS
 - SPECIAL PROTECTION AREAS
 - SPECIAL PROTECTION AS RECREATIONAL WATER
- HERITANCE SITES**
 - CULTURAL
 - INDUSTRIAL SITES
 - LANDFILL
 - AREAS / DEVELOPED TOURIST
 - AREAS / DEVELOPING TOURIST
 - RICE CROP
 - GREEN HOUSES
 - CROPS
 - OTHER
 - AIRPORT
 - PORT
 - FLOOD ZONE T=1000 YEARS
- BOUNDARIES OF NEIGHBORING STATES**
- RIVER BASIN DISTRICT EL10**
- OTHER RIVER BASIN DISTRICTS**
- APSR / STREAMS**
- ROAD NETWORK**
 - MAJOR NATIONAL ROAD NETWORK
 - SECONDARY - TERTIARY NATIONAL ROAD NETWORK
 - MAJOR PROVINCIAL ROAD NETWORK
 - SECONDARY-TERTIARY PROVINCIAL ROAD NETWORK
 - RAILWAY LINE

Scale: 0 2.500 5.000 7.500 10.000 M

GGRS 67 QUADRATURE PER 2.500 M.

2022



1

μ μ (EL10)

1° - 7

=1000 - EL10APSR004, EL10APSR006 & EL10APSR008

FLUVIAL FLOOD RISK MAP FOR RETURN PERIOD =1000 YEARS - APSFR EL10APSR004, EL10APSR006 & EL10APSR008

EL10-07-FRSK-01K-025-42-4470-02	1:25.000
23-12-2023	2.0

/ &

NERCO