

/LEGEND

LANDUSE - ECONOMIC ACTIVITIES - CULTURAL HERITAGE (within flood zone)

- / HOSPITAL** (Red circle with cross)
- CLINICS-HEALTH UNITS** (Red circle)
- / EDUCATION** (Blue circle)
- FACILITIES** (Yellow circle)
- / CULTURAL HERITAGE MONUMENTS** (Green circle)
- CIVIL PROTECTION FACILITIES** (Blue circle)
- LIVESTOCK HOLDINGS** (Yellow circle)
- / ENERGY STATIONS- STATIONS (SHPP)** (Yellow triangle)
- WATER SUPPLY BOREHOLES- WATER SOURCES** (Yellow circle)
- WASTE WATER TREATMENT PLANT**
 - <10,000 (Blue circle)
 - 10,000-100,000 (Blue circle)
 - >100,000 (Blue circle)
- / INDUSTRIES**
 - IPPC (Red circle)
 - SEVESO (Red circle)
 - IED (Red circle)
 - OTHER UNITS (Red circle)
- INDICATIVE AFFECTED POPULATION**
 - < 500 (Pink circle)
 - 500 - 2000 (Pink circle)
 - > 2000 (Pink circle)
- HERITANCE SITES** (Green square)
- INDUSTRIAL SITES** (Purple square)
- / LANDFILL** (Green square)
- AREAS / DEVELOPED TOURIST** (Yellow square)
- AREAS / DEVELOPING TOURIST** (Orange square)
- / RICE CROP** (Yellow square)
- / GREEN HOUSES** (Yellow square)
- CROPS** (Green square)
- / AIRPORT** (Blue square)
- FLOOD ZONE T=1000 YEARS** (Blue hatched square)

PROTECTED AREAS OF 2000/60/EC DIRECTIVE

- / SITE OF COMMUNITY IMPORTANCE** (Green dashed line)
- / SITE OF COMMUNITY IMPORTANCE AND SPECIAL PROTECTION AREAS** (Red dashed line)
- / SPECIAL PROTECTION AS RECREATIONAL WATER** (Blue dashed line)
- / WATER SYSTEMS IDENTIFIED** (Blue dashed line)

BOUNDARIES OF NEIGHBORING STATES (Black dashed line)

RIVER BASIN DISTRICT EL10 (Black solid line)

OTHER RIVER BASIN DISTRICTS (Black dashed line)

/ APSFR (Red dashed line)

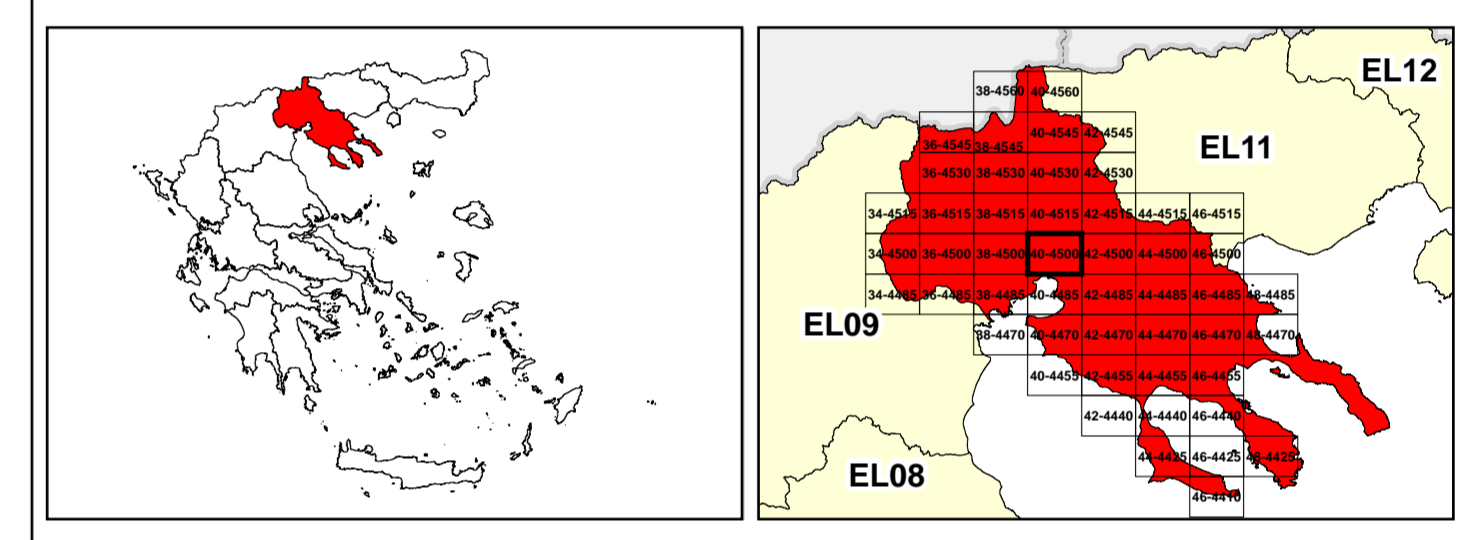
/ STREAMS (Blue line)

GGRS 67 QUADRATURE PER 2.500 M.

/ ROAD NETWORK

- MAJOR NATIONAL ROAD NETWORK** (Thick black line)
- / SECONDARY - TERTIARY NATIONAL ROAD NETWORK** (Thin black line)
- MAJOR PROVINCIAL ROAD NETWORK** (Red line)
- / SECONDARY-TERTIARY PROVINCIAL ROAD NETWORK** (Thin red line)
- / RAILWAY LINE** (Black line with cross-ticks)

Scale: 0, 1000, 2000, 4000 meters.



Logo of the Ministry of Environment, Energy and Climate Change of Greece.

1

μ μ (EL10)

1° - 7

=1000 - EL10APSF006 & EL10APSF008

FLUVIAL FLOOD RISK MAP FOR RETURN PERIOD =1000 YEARS - APSFR EL10APSF006 & EL10APSF008

EL10-07-FRSK-01K-025-40-4500-02	1:25.000
23-12-2023	2.0

NERCO

Logo of the European Union.

Logo of the Ministry of Environment, Energy and Climate Change of Greece (ΕΣΠΑ 2014-2020).