



**/LEGEND**

**LANDUSE - ECONOMIC ACTIVITIES - CULTURAL HERITAGE (within flood zone)**

- HOSPITAL** (Red circle with cross)
- CLINICS-HEALTH UNITS** (Red circle with cross)
- EDUCATION** (Red circle with cross)
- SPORT** (Red circle with cross)
- CULTURAL HERITAGE MONUMENTS** (Red circle with cross)
- CIVIL PROTECTION FACILITIES** (Red circle with cross)
- LIVESTOCK HOLDINGS** (Red circle with cross)
- ENERGY STATIONS - STATIONS (SHPP)** (Red circle with cross)
- SMALL HYDROPOWER STATIONS (SHPP)** (Red circle with cross)
- WATER SUPPLY BOREHOLES - WATER SOURCES** (Red circle with cross)
- WASTE WATER TREATMENT PLANT** (Blue circle with cross)
- INDUSTRIES** (Red circle with cross)
- SEVESO** (Red circle with cross)
- IED** (Red circle with cross)
- OTHER UNITS** (Red circle with cross)
- INDICATIVE AFFECTED POPULATION** (Pink circle with cross)
- PROTECTED AREAS OF 2000/60/EC DIRECTIVE** (Green dashed line)
- SITE OF COMMUNITY IMPORTANCE** (Green dashed line)
- SCISPA** (Green dashed line)
- SITE OF COMMUNITY IMPORTANCE AND SPECIAL PROTECTION AREAS** (Green dashed line)
- SPECIAL PROTECTION AREAS** (Red dashed line)
- BOUNDARIES OF NEIGHBORING STATES** (Black dashed line)
- RIVER BASIN DISTRICT EL10** (Black dashed line)
- OTHER RIVER BASIN DISTRICTS** (Black dashed line)
- APSR** (Red dashed line)
- STREAMS** (Blue dashed line)
- ROAD NETWORK** (Black solid line)
- MAJOR NATIONAL ROAD NETWORK** (Black solid line)
- SECONDARY - TERTIARY NATIONAL ROAD NETWORK** (Black solid line)
- MAJOR PROVINCIAL ROAD NETWORK** (Red solid line)
- SECONDARY-TERTIARY PROVINCIAL ROAD NETWORK** (Red solid line)
- RAILWAY LINE** (Black solid line)

**HERITANCE SITES** (Green dashed line)

**INDUSTRIAL SITES** (Green dashed line)

**LANDFILL** (Green dashed line)

**DEVELOPED TOURIST AREAS** (Green dashed line)

**DEVELOPING TOURIST AREAS** (Green dashed line)

**RICE CROP** (Green dashed line)

**GREEN HOUSES** (Green dashed line)

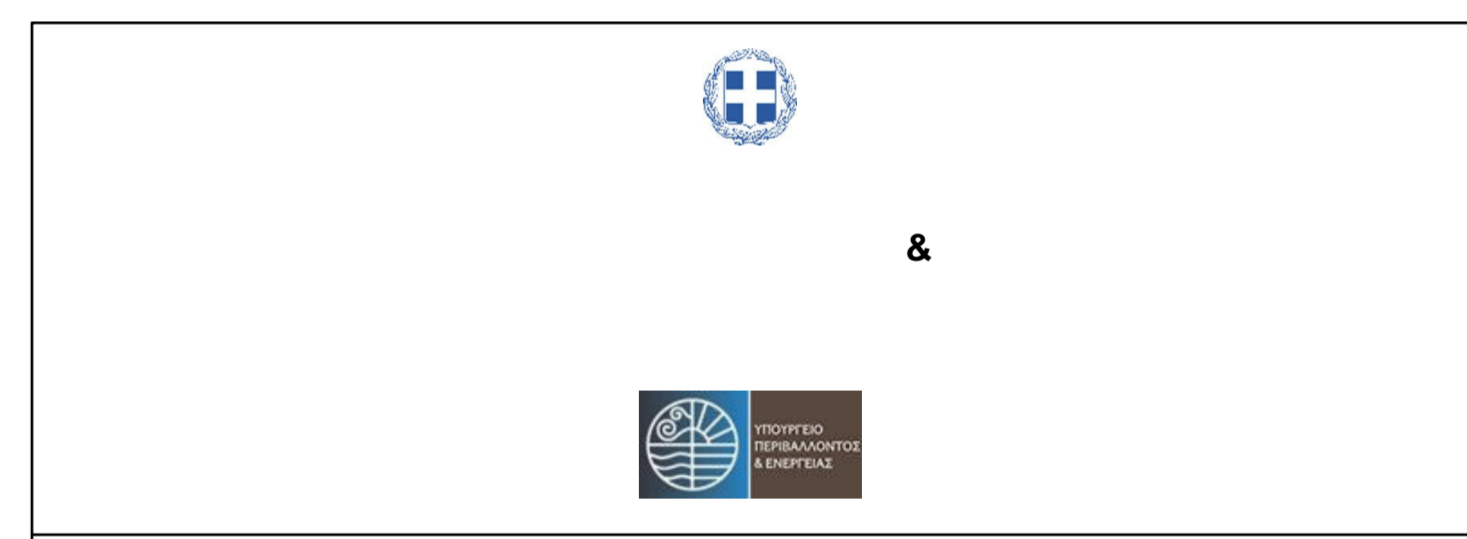
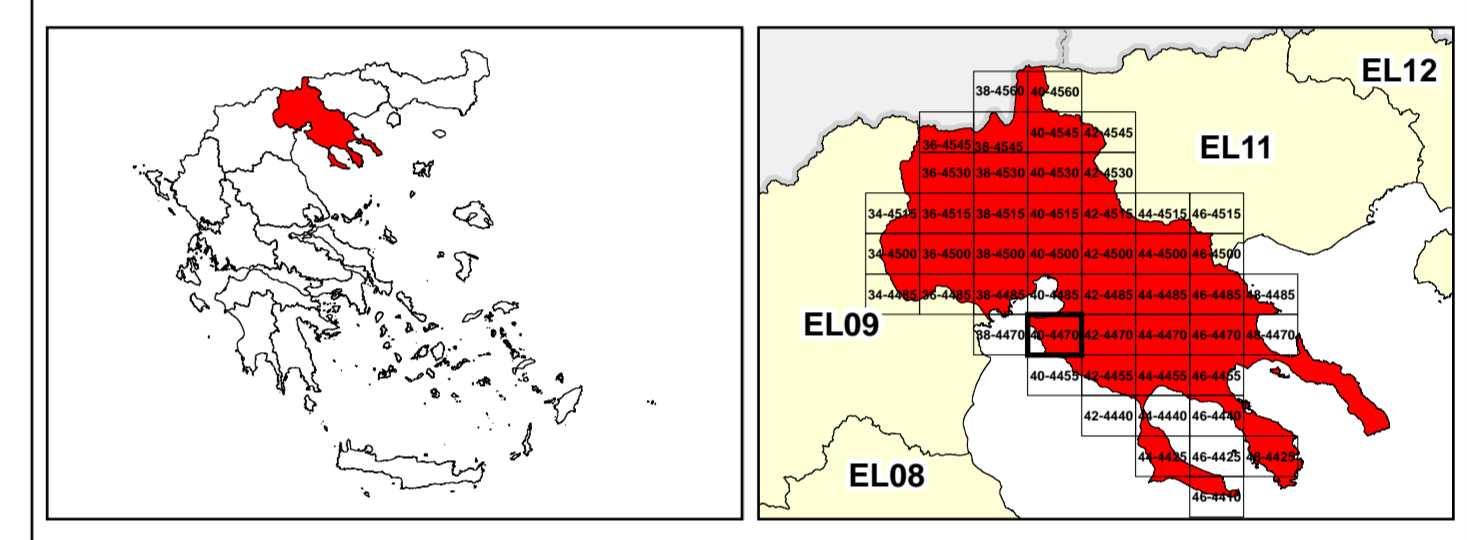
**CROPS** (Green dashed line)

**PORT** (Green dashed line)

**FLOOD ZONE T=1000 YEARS** (Green dashed line)

**SCALE**  
0 1000 2000 3000 4000 5000 6000 7000 8000 9000 10000  
km

**COORDINATES**  
GGRS 87 QUADRATURE PER 2.500 M.  
2022  
(1) 31.087.9720m (2) 79.919.0630m



1

μ μ (EL10)

1° - 7

=1000 - EL10APSR004 & EL10APSR008

**FLUVIAL FLOOD RISK MAP FOR RETURN PERIOD =1000 YEARS - APSFR EL10APSR004 & EL10APSR008**

EL10-07-FRSK-01K-025-40-4470-02	1:25.000
23-12-2023	2.0

NERCO