

/LEGEND

LANDUSE - ECONOMIC ACTIVITIES - CULTURAL HERITAGE (within flood zone)

- / HOSPITAL** (Red cross symbol)
- CLINICS-HEALTH UNITS** (Red circle with cross symbol)
- / EDUCATION** (Red circle with book symbol)
- FACILITIES** (Red circle with building symbol)
- / CULTURAL HERITAGE MONUMENTS** (Red circle with monument symbol)
- CIVIL PROTECTION FACILITIES** (Red circle with fire symbol)
- LIVESTOCK HOLDINGS** (Red circle with cow symbol)
- / ENERGY STATIONS- STATIONS (SHPP)** (Red circle with lightning bolt symbol)
- WATER SUPPLY BOREHOLES- WATER SOURCES** (Red circle with water tap symbol)
- WASTE WATER TREATMENT PLANT** (Blue circle with WWT symbol)
- / INDUSTRIES** (Red circle with factory symbol)
- IPPC** (Red circle with factory symbol)
- SEVESO** (Red circle with hazard symbol)
- IED** (Red circle with bomb symbol)
- OTHER UNITS** (Red circle with hazard symbol)
- INDICATIVE AFFECTED POPULATION**
 - < 500 (Pink circle with 1 person)
 - 500 - 2000 (Pink circle with 2 people)
 - > 2000 (Pink circle with 3 people)
- HERITANCE SITES** (Yellow rectangle with cross-hatch)
- INDUSTRIAL SITES** (Yellow rectangle with grid)
- / LANDFILL** (Yellow rectangle with diagonal lines)
- AREAS / DEVELOPED TOURIST** (Yellow rectangle with horizontal lines)
- AREAS / DEVELOPING TOURIST** (Yellow rectangle with vertical lines)
- / RICE CROP** (Yellow rectangle with horizontal lines)
- / GREEN HOUSES** (Yellow rectangle with diagonal lines)
- / OTHER** (Yellow rectangle with grid)
- CROPS** (Yellow rectangle with horizontal lines)
- PORT** (Yellow rectangle with horizontal lines)
- FLOOD ZONE T=1000 YEARS** (Yellow rectangle with diagonal lines)

PROTECTED AREAS OF 2000/60/EC DIRECTIVE

- / SITE OF COMMUNITY IMPORTANCE** (Red dashed line)
- SCISPA: / SITE OF COMMUNITY IMPORTANCE AND SPECIAL PROTECTION AREAS** (Red dashed line)
- / SPECIAL PROTECTION AREAS** (Red dashed line)
- / WATER SYSTEMS IDENTIFIED AS RECREATIONAL WATER** (Blue dashed line)

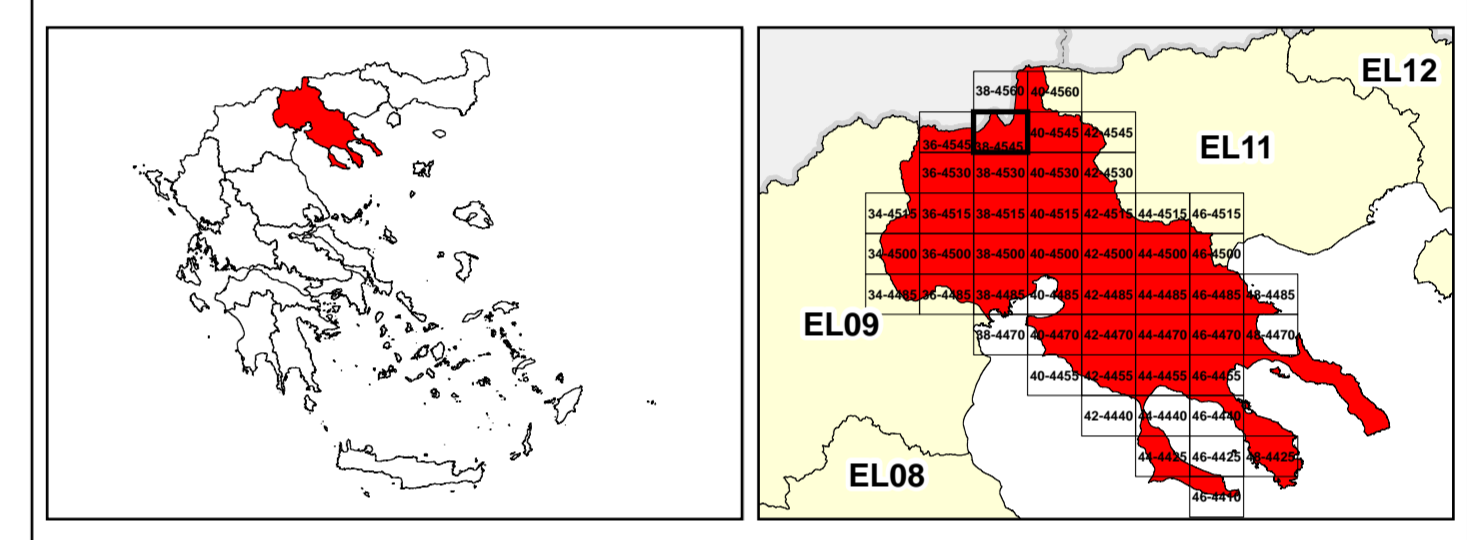
BOUNDARIES OF NEIGHBORING STATES

- RIVER BASIN DISTRICT EL10** (Black dashed line)
- OTHER RIVER BASIN DISTRICTS** (Black dashed line)
- / APSFR** (Black dashed line)
- / STREAMS** (Blue line)

ROAD NETWORK

- MAJOR NATIONAL ROAD NETWORK** (Thick black line)
- / SECONDARY - TERTIARY NATIONAL ROAD NETWORK** (Thin black line)
- MAJOR PROVINCIAL ROAD NETWORK** (Red line)
- / SECONDARY-TERTIARY PROVINCIAL ROAD NETWORK** (Thin red line)
- / RAILWAY LINE** (Black line with cross-ticks)

Scale: 0 to 2,500 M. GGRS 87 QUADRATURE PER 2.500 M.



Logo of the Ministry of Environment, Planning and Construction of North Macedonia.

1

μ μ (EL10)

1° - 7

=1000 - EL10APSFRO08

FLUVIAL FLOOD RISK MAP FOR RETURN PERIOD =1000 YEARS - APSFR EL10APSFRO08

EL10-07-FRSK-01K-025-38-4545-02	1:25.000
23-12-2023	2.0

NERCO logo

Logo of the European Union

Logo of the Ministry of Environment, Planning and Construction of North Macedonia (ΕΣΠΑ 2014-2020)