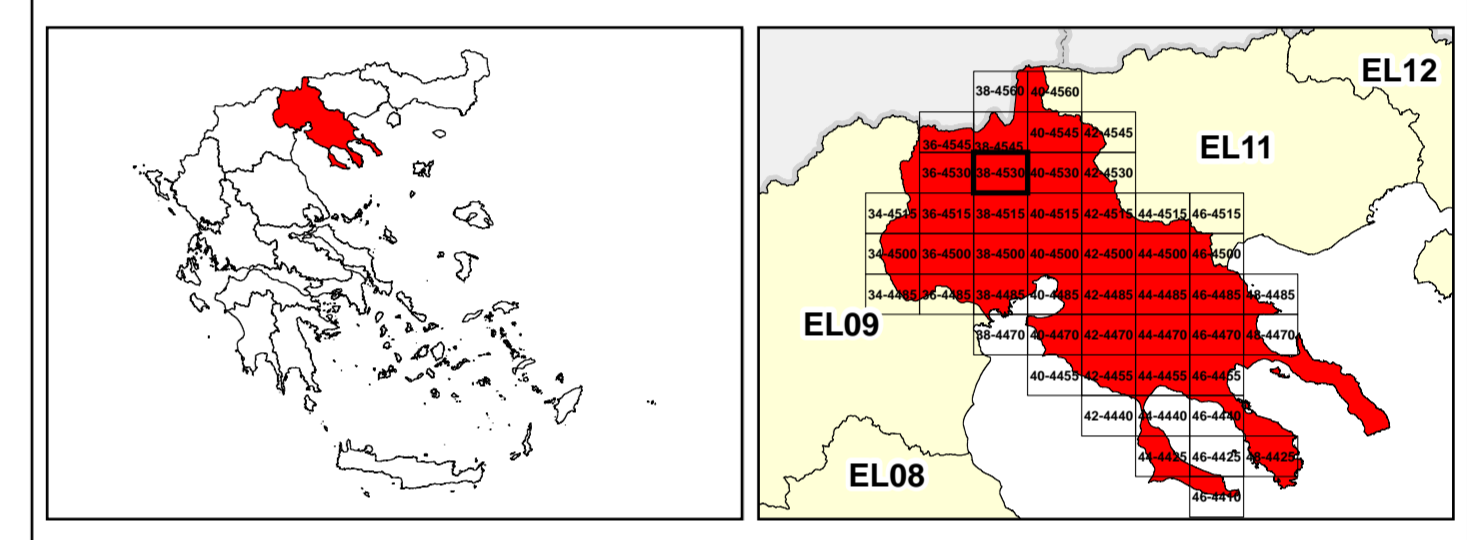


**LEGEND**

**LANDUSE - ECONOMIC ACTIVITIES - CULTURAL HERITAGE (within flood zone)**

- HOSPITAL
- CLINICS-HEALTH UNITS
- EDUCATION
- SPORT
- INDUSTRIES
- IPPC
- SEVESO
- IED
- OTHER UNITS
- INDICATIVE AFFECTED POPULATION
- PROTECTED AREAS OF 2000/60/EC DIRECTIVE
- SC: IMPORTANCE
- SPA: AREAS
- BOUNDARIES OF NEIGHBORING STATES
- RIVER BASIN DISTRICT EL10
- OTHER RIVER BASIN DISTRICTS
- APSFR
- STREAMS
- WASTE WATER TREATMENT PLANT
- HERITAGE SITES
- INDUSTRIAL SITES
- LANDFILL
- AREAS / DEVELOPED TOURIST
- AREAS / DEVELOPED TOURIST
- AREAS / RICE CROP
- AREAS / GREEN HOUSES
- CROPS
- PORT
- FLOOD ZONE T=1000 YEARS
- PROTECTED AREAS OF 2000/60/EC DIRECTIVE
- SITE OF COMMUNITY IMPORTANCE AND SPECIAL PROTECTION AREAS
- SPECIAL PROTECTION AREAS
- WATER SYSTEMS IDENTIFIED AS RECREATIONAL WATER
- ROAD NETWORK
- MAJOR NATIONAL ROAD NETWORK
- SECONDARY - TERTIARY NATIONAL ROAD NETWORK
- MAJOR PROVINCIAL ROAD NETWORK
- SECONDARY-TERTIARY PROVINCIAL ROAD NETWORK
- RAILWAY LINE

Scale: 0 to 2,500 M. GGRS 87 QUADRATURE PER 2.500 M.



&

1

μ μ (EL10)

1° - 7

=1000 - EL10APFSR008

**FLUVIAL FLOOD RISK MAP FOR RETURN PERIOD =1000 YEARS - APSFR EL10APFSR008**

EL10-07-FRSK-01K-025-38-4530-02	1:25.000
23-12-2023	2.0

NERCO