

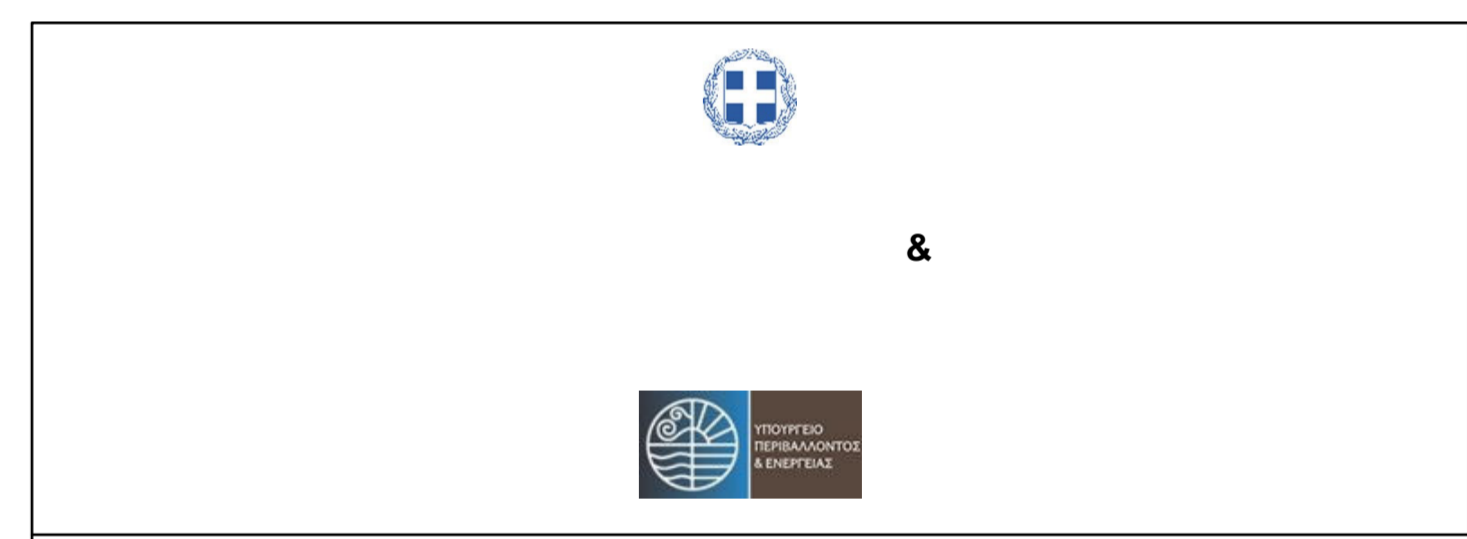
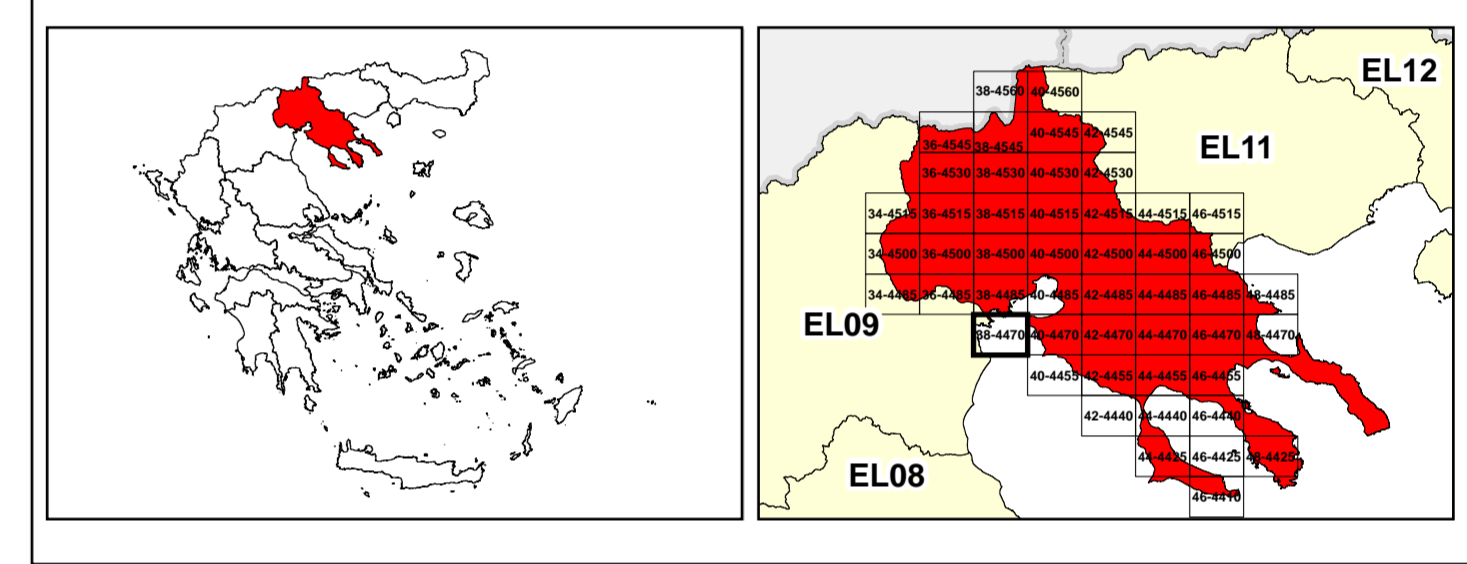
/LEGEND

LANDUSE - ECONOMIC ACTIVITIES - CULTURAL HERITAGE (within flood zone)

/ HOSPITAL	WASTE WATER TREATMENT PLANT	/ CULTURAL HERITANCE SITES
CLINICS-HEALTH UNITS	/ EDUCATION	INDUSTRIAL SITES
FACILITIES	/ SPORT	LANDFILL
HERITAGE MONUMENTS	/ INDUSTRIES	/ DEVELOPED TOURIST AREAS
CIVIL PROTECTION FACILITIES	IPPC	/ DEVELOPING TOURIST AREAS
LIVESTOCK HOLDINGS	SEVESO	/ RICE CROP
/ ENERGY STATIONS	IED	/ GREEN HOUSES
/ SMALL HYDROPOWER STATIONS (SHP)	OTHER UNITS	/ OTHER
WATER SUPPLY BOREHOLES-WATER SOURCES	INDICATIVE AFFECTED POPULATION	CROPS
	< 500	PORT
	500 - 2000	=1000 FLOOD ZONE T=1000 YEARS
	> 2000	
SC: IMPORTANCE	PROTECTED AREAS OF 2000/60/EC DIRECTIVE	/ WATER SYSTEMS IDENTIFIED AS RECREATIONAL WATER
SPA: AREAS	/ SITE OF COMMUNITY IMPORTANCE	/ SITE OF COMMUNITY IMPORTANCE AND SPECIAL PROTECTION AREAS
BOUNDARIES OF NEIGHBORING STATES	/ MAJOR NATIONAL ROAD NETWORK	
RIVER BASIN DISTRICT EL10	/ SECONDARY - TERTIARY NATIONAL ROAD NETWORK	
OTHER RIVER BASIN DISTRICTS	/ MAJOR PROVINCIAL ROAD NETWORK	
/ STREAMS	/ SECONDARY-TERTIARY PROVINCIAL ROAD NETWORK	
/ APsFR	/ RAILWAY LINE	

0 1 2 3 Km
GGRS 87 QUADRATURE PER 2.500 M.

433 138 0290m



1

μ μ (EL10)

1° - 7

=1000 - EL10APSFR008

FLUVIAL FLOOD RISK MAP FOR RETURN PERIOD =1000 YEARS - APSFR EL10APSFR008

EL10-07-FRSK-01K-025-38-4470-02	1:25.000
23-12-2023	2.0

/ &

NERCO -

μ