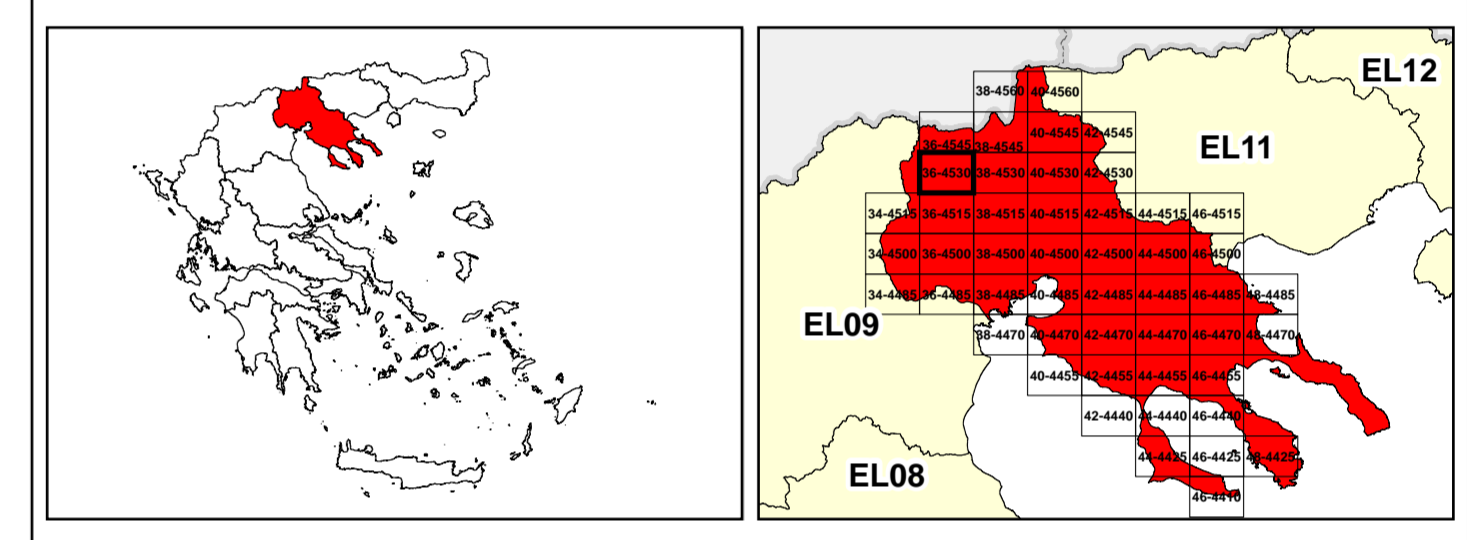


**/LEGEND**

**LANDUSE - ECONOMIC ACTIVITIES - CULTURAL HERITAGE (within flood zone)**

- HOSPITAL**
- CLINICS-HEALTH UNITS**
- EDUCATION**
- FACILITIES**
- HERITAGE MONUMENTS**
- CIVIL PROTECTION FACILITIES**
- LIVESTOCK HOLDINGS**
- ENERGY STATIONS- STATIONS (SHP)**
- WATER SUPPLY BOREHOLES- WATER SOURCES**
- WASTE WATER TREATMENT PLANT**
  - <10,000
  - 10,000-100,000
  - >100,000
- INDUSTRIES**
  - IPPC
  - SEVESO
  - IED
  - OTHER UNITS
- INDICATIVE AFFECTED POPULATION**
  - < 500
  - 500 - 2000
  - > 2000
- HERITANCE SITES**
- INDUSTRIAL SITES**
- LANDFILL**
- AREAS / DEVELOPED TOURIST**
- AREAS / DEVELOPING TOURIST**
- AREAS / RICE CROP**
- AREAS / GREEN HOUSES**
- CROPS**
- PORT**
- FLOOD ZONE T=1000 YEARS**
- PROTECTED AREAS OF 2000/60/EC DIRECTIVE**
  - SITE OF COMMUNITY IMPORTANCE
  - SITE OF COMMUNITY IMPORTANCE AND SPECIAL PROTECTION AREAS
  - SPECIAL PROTECTION AREAS
  - WATER SYSTEMS IDENTIFIED AS RECREATIONAL WATER
- BOUNDARIES OF NEIGHBORING STATES**
- RIVER BASIN DISTRICT EL10**
- OTHER RIVER BASIN DISTRICTS**
- APSF**
- STREAMS**
- ROAD NETWORK**
  - MAJOR NATIONAL ROAD NETWORK
  - SECONDARY - TERTIARY NATIONAL ROAD NETWORK
  - MAJOR PROVINCIAL ROAD NETWORK
  - SECONDARY-TERTIARY PROVINCIAL ROAD NETWORK
  - RAILWAY LINE

Scale: 0 to 2,500 M. GGRS 87 QUADRATURE PER 2,500 M.



Logo of the Ministry of Environment, Energy and Climate Change of Greece.

1

μ μ (EL10)

1° - 7

=1000 - EL10APSF008

**FLUVIAL FLOOD RISK MAP FOR RETURN PERIOD =1000 YEARS - APSFR EL10APSF008**

EL10-07-FRSK-01K-025-36-4530-02	1:25.000
23-12-2023	2.0

NERCO

Logo of the European Union.

Logo of the Ministry of Environment, Energy and Climate Change of Greece (ΕΣΠΑ 2014-2020).