



/LEGEND

LANDUSE - ECONOMIC ACTIVITIES - CULTURAL HERITAGE (within flood zone)

- / HOSPITAL** (Red circle with white cross)
- CLINICS-HEALTH UNITS** (Red circle)
- / EDUCATION** (Blue circle)
- FACILITIES** (Yellow circle)
- / CULTURAL HERITAGE MONUMENTS** (Green circle)
- CIVIL PROTECTION FACILITIES** (Blue circle)
- LIVESTOCK HOLDINGS** (Yellow circle)
- / ENERGY STATIONS- STATIONS (SHP)** (Yellow circle)
- WATER SUPPLY BOREHOLES- WATER SOURCES** (Yellow circle)
- WASTE WATER TREATMENT PLANT**
 - <10,000 (Blue circle)
 - 10,000-100,000 (Blue circle)
 - >100,000 (Blue circle)
- / INDUSTRIES**
 - IPPC (Red circle)
 - SEVESO (Red circle)
 - IED (Red circle)
 - OTHER UNITS (Red circle)
- INDICATIVE AFFECTED POPULATION**
 - < 500 (Pink circle)
 - 500 - 2000 (Pink circle)
 - > 2000 (Pink circle)
- HERITANCE SITES** (Yellow rectangle)
- INDUSTRIAL SITES** (Purple rectangle)
- / LANDFILL** (Green rectangle)
- AREAS / DEVELOPED TOURIST** (Yellow rectangle)
- AREAS / DEVELOPING TOURIST** (Orange rectangle)
- / RICE CROP** (Yellow rectangle)
- / GREEN HOUSES** (Yellow rectangle)
- / OTHER** (Yellow rectangle)
- CROPS** (Green rectangle)
- PORT** (Blue rectangle)
- FLOOD ZONE T=1000 YEARS** (Blue rectangle)

PROTECTED AREAS OF 2000/60/EC DIRECTIVE

- / SITE OF COMMUNITY IMPORTANCE** (Green dashed line)
- SCISPA: / SITE OF COMMUNITY IMPORTANCE AND SPECIAL PROTECTION AREAS** (Purple dashed line)
- / SPECIAL PROTECTION AS RECREATIONAL WATER** (Blue dashed line)
- / WATER SYSTEMS IDENTIFIED** (Blue dashed line)

BOUNDARIES OF NEIGHBORING STATES

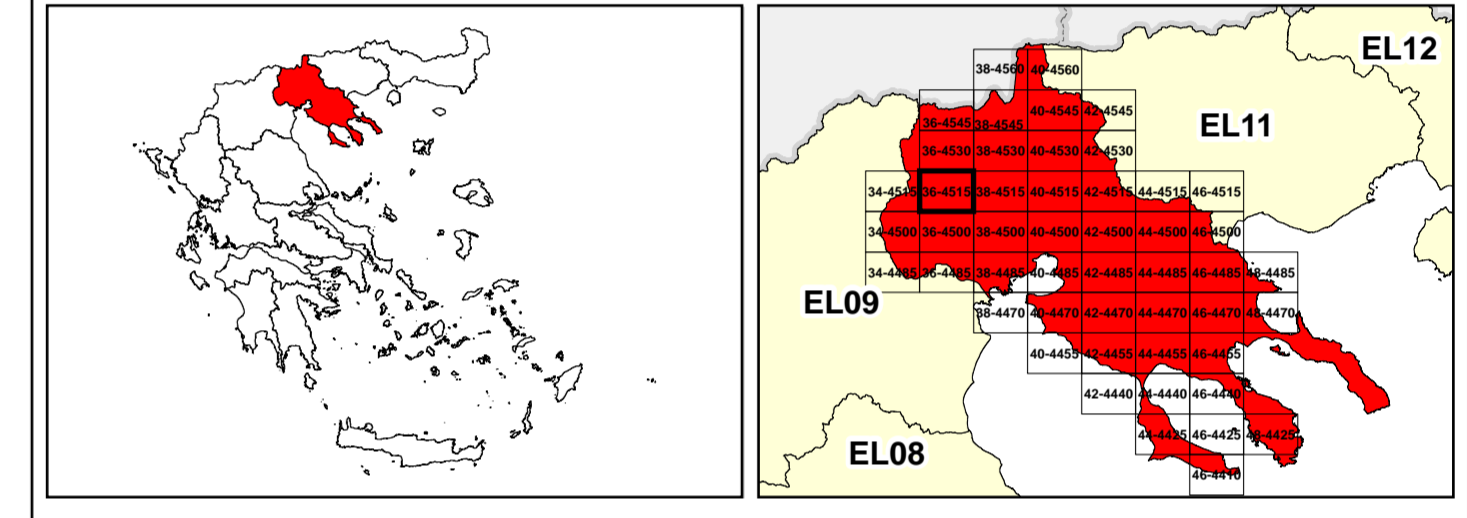
- EL10 / RIVER BASIN DISTRICT EL10 (Black line)
- OTHER RIVER BASIN DISTRICTS (Dotted line)
- APFSR / STREAMS (Blue line)

ROAD NETWORK

- MAJOR NATIONAL ROAD NETWORK (Thick black line)
- SECONDARY - TERTIARY NATIONAL ROAD NETWORK (Thin black line)
- MAJOR PROVINCIAL ROAD NETWORK (Red line)
- SECONDARY-TERTIARY PROVINCIAL ROAD NETWORK (Thin red line)
- RAILWAY LINE (Black line with cross-ticks)

Scale: 0 to 2.500 M. GGRS 87 QUADRATURE PER 2.500 M.

Coordinates: 48° 13' 33.1382.0960" (N) 133° 43' 33.1382.0960" (E)



ΕΛΛΗΝΙΚΗ ΔΗΜΟΚΡΑΤΙΑ

ΥΠΟΥΡΓΕΙΟ ΠΕΡΙΒΑΛΛΟΝΤΟΣ ΚΑΙ ΚΛΙΜΑΤΟΣ

1

μ μ (EL10)

1° - 7

=1000 - EL10APFSR008

FLUVIAL FLOOD RISK MAP FOR RETURN PERIOD =1000 YEARS - APSFR EL10APFSR008

EL10-07-FRSK-01K-025-36-4515-02	1:25.000
23-12-2023	2.0

NERCO

ΕΣΠΑ 2014-2020

ΕΥΡΩΠΑΪΚΟ ΚΕΝΤΡΙΚΟ ΚΑΙ ΕΛΛΗΝΙΚΟ ΚΡΑΤΟΣ