

**/LEGEND**

**LANDUSE - ECONOMIC ACTIVITIES - CULTURAL HERITAGE (within flood zone)**

/ HOSPITAL	WASTE WATER TREATMENT PLANT	/ CULTURAL HERITANCE SITES
CLINICS-HEALTH UNITS	10,000-100,000	INDUSTRIAL SITES
/ EDUCATION FACILITIES	>100,000	LANDFILL
/ SPORT FACILITIES	IPPC	AREAS / DEVELOPED TOURIST
/ CULTURAL HERITANCE MONUMENTS	SEVESO	AREAS / DEVELOPING TOURIST
CIVIL PROTECTION FACILITIES	IED	/ RICE CROP
LIVESTOCK HOLDINGS	OTHER UNITS	/ GREEN HOUSES
/ ENERGY STATIONS- STATIONS (SHPP)	INDICATIVE AFFECTED POPULATION < 500	CROPS
/ SMALL HYDROPOWER STATIONS (SHPP)	500 - 2000	PORT
WATER SUPPLY BOREHOLES-WATER SOURCES	> 2000	FLOOD ZONE T=1000 YEARS
SC: IMPORTANCE	PROTECTED AREAS OF 2000/60/EC DIRECTIVE	/ SITE OF COMMUNITY IMPORTANCE AND SPECIAL PROTECTION AREAS
SPA: AREAS	/ SPECIAL PROTECTION AREAS	/ WATER SYSTEMS IDENTIFIED AS RECREATIONAL WATER

**BOUNDARIES OF NEIGHBORING STATES**

**RIVER BASIN DISTRICT EL10**

**OTHER RIVER BASIN DISTRICTS**

**APSFR**

**STREAMS**

**ROAD NETWORK**

**MAJOR NATIONAL ROAD NETWORK**

**SECONDARY - TERTIARY NATIONAL ROAD NETWORK**

**MAJOR PROVINCIAL ROAD NETWORK**

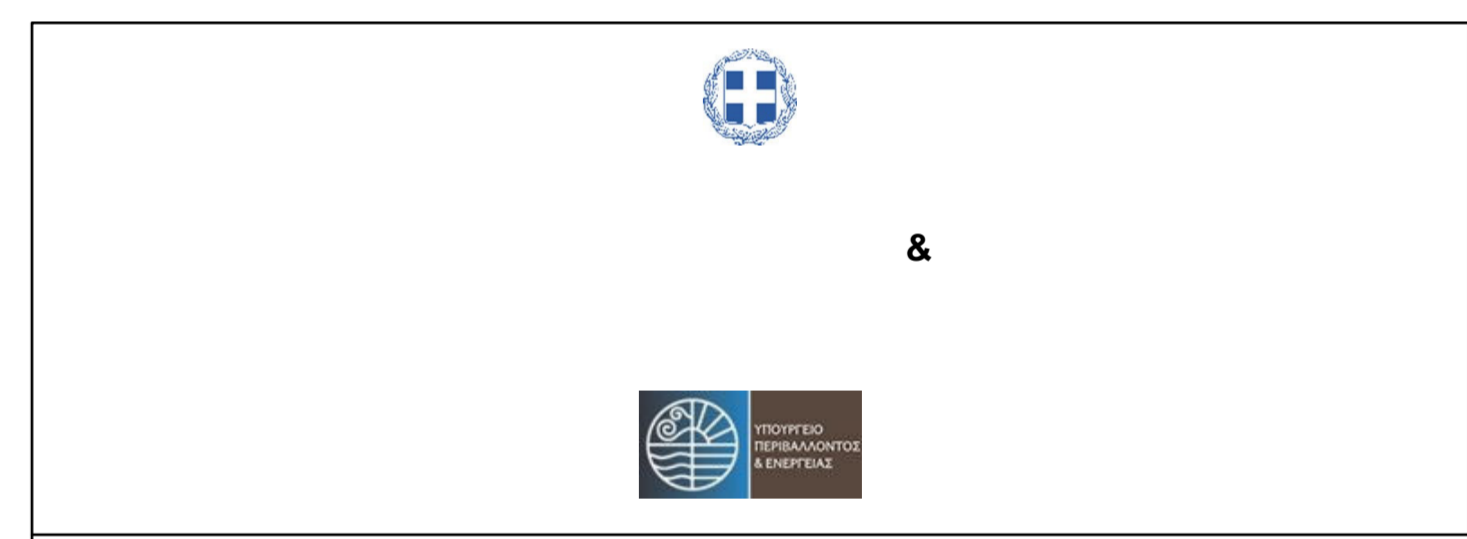
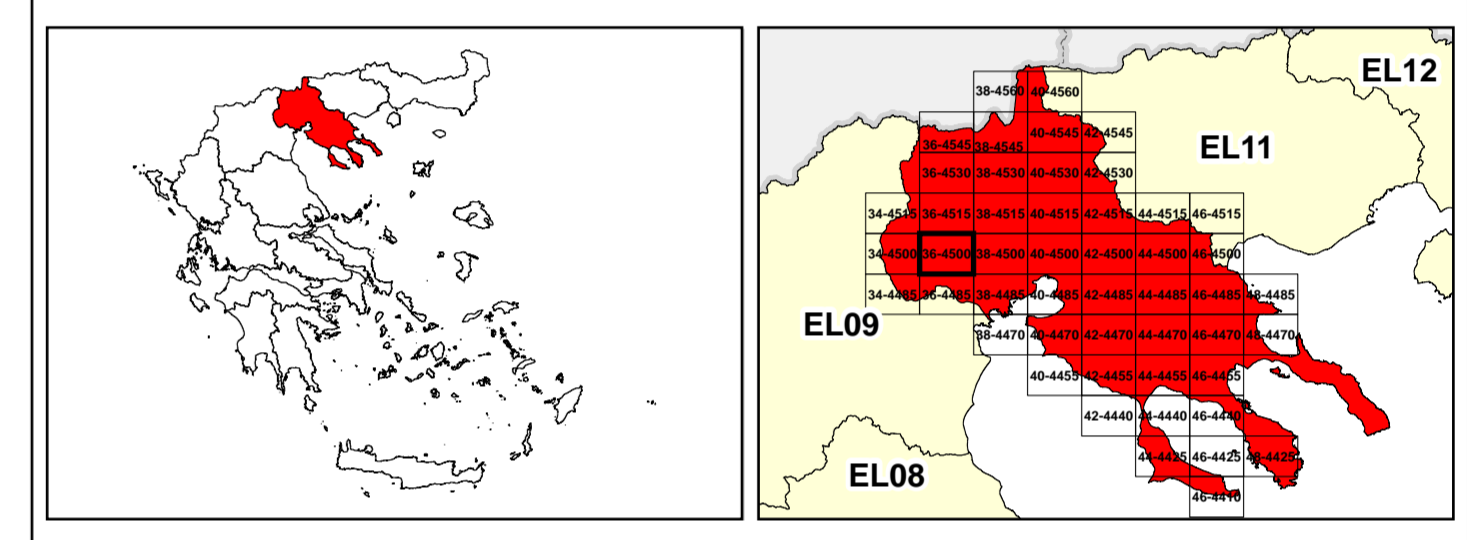
**SECONDARY-TERTIARY PROVINCIAL ROAD NETWORK**

**RAILWAY LINE**

0 1km 2.500

GGRS 87 QUADRATURE PER 2.500 M.

2022 (1) 331.382.096000



1

μ μ (EL10)

1° - 7

=1000 EL10APSFR008

**FLUVIAL FLOOD RISK MAP FOR RETURN PERIOD =1000 YEARS - APSFR EL10APSFR008**

EL10-07-FRSK-01K-025-36-4500-02	1:25.000
23-12-2023	2.0

/ &

NERCO

μ

μ