



LEGEND

LANDUSE - ECONOMIC ACTIVITIES - CULTURAL HERITAGE (within flood zone)

- HOSPITAL
- CLINICS-HEALTH UNITS
- EDUCATION
- FACILITIES
- HERITAGE MONUMENTS
- CIVIL PROTECTION FACILITIES
- LIVESTOCK HOLDINGS
- ENERGY STATIONS
- SMALL HYDROPOWER STATIONS (SHPP)
- WATER SUPPLY BOREHOLES-WATER SOURCES
- WASTE WATER TREATMENT PLANT
 - <10,000
 - 10,000-100,000
 - >100,000
- INDUSTRIES
 - IPPC
 - SEVESO
 - IED
 - OTHER UNITS
- INDICATIVE AFFECTED POPULATION
 - < 500
 - 500 - 2000
 - > 2000
- PROTECTED AREAS OF 2000/60/EC DIRECTIVE
 - SITE OF COMMUNITY IMPORTANCE
 - SITE OF COMMUNITY IMPORTANCE AND SPECIAL PROTECTION AREAS
 - SPECIAL PROTECTION AS RECREATIONAL WATER
- HERITANCE SITES
- INDUSTRIAL SITES
- LANDFILL
- AREAS / DEVELOPED TOURIST
- AREAS / DEVELOPING TOURIST
- RICE CROP
- GREEN HOUSES
- CROPS
- PORT
- FLOOD ZONE T=1000 YEARS
- FLOOD ZONE T=10000 YEARS

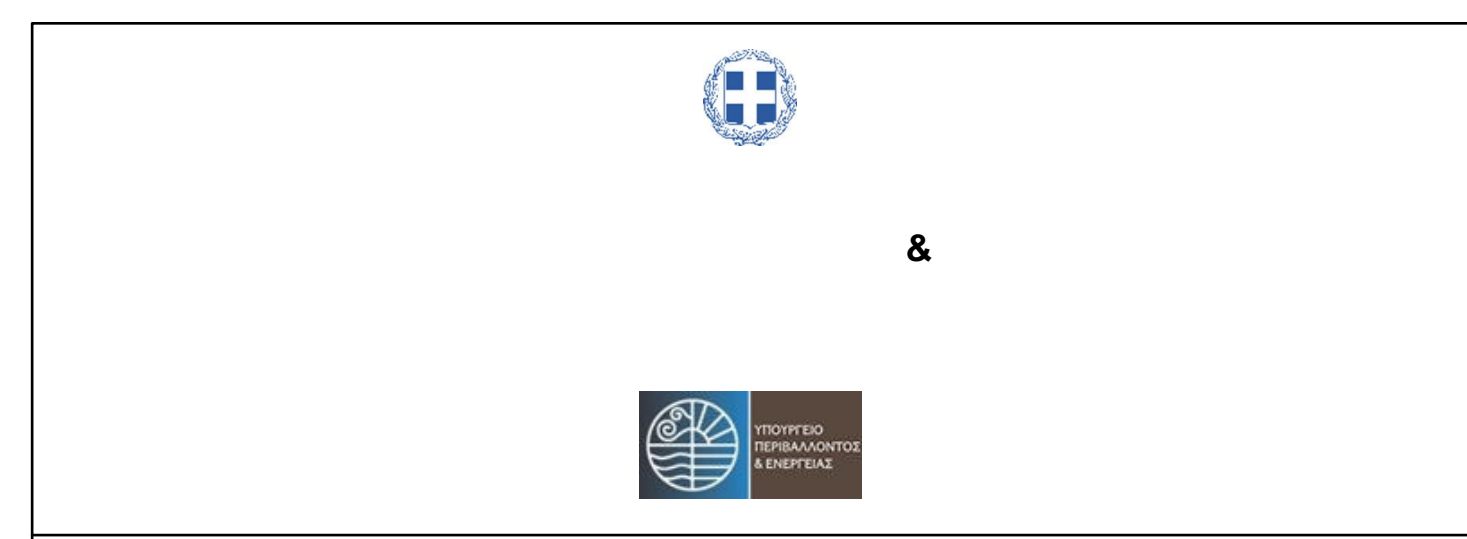
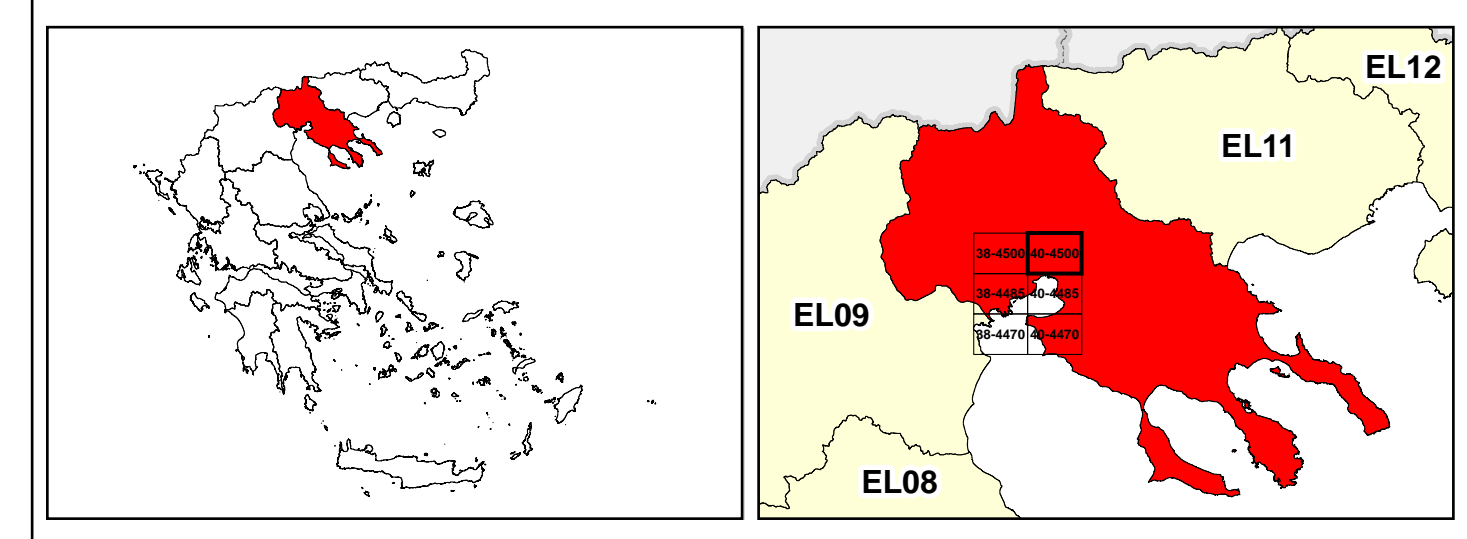
ROAD NETWORK

- MAJOR NATIONAL ROAD NETWORK
- SECONDARY - TERTIARY NATIONAL ROAD NETWORK
- MAJOR PROVINCIAL ROAD NETWORK
- SECONDARY-TERTIARY PROVINCIAL ROAD NETWORK
- RAILWAY LINE

BOUNDARIES OF NEIGHBORING STATES

- RIVER BASIN DISTRICT EL10
- OTHER RIVER BASIN DISTRICTS
- APSR
- STREAMS

Scale: 0 to 2.500 M. GGRS 87 QUADRATURE PER 2.500 M.



1

μ μ (EL10)

1° - 7

≈100 - EL10APSR008

SEA LEVEL RISE FLOOD RISK MAP FOR RETURN PERIOD T=100 YEARS - APSFR EL10APSR008

| | |
|---------------------------------|----------|
| EL10-07-FRSF-100-025-40-4500-02 | 1:25.000 |
| 23-12-2023 | 2.0 |

NERCO