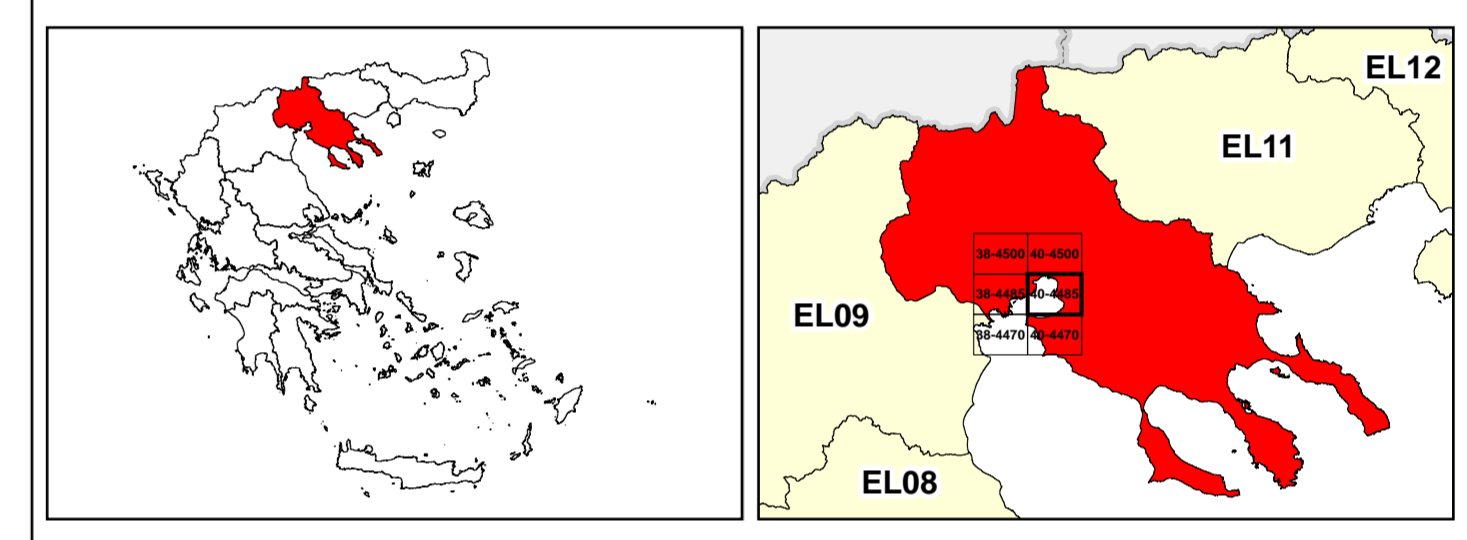


/LEGEND

LANDUSE - ECONOMIC ACTIVITIES - CULTURAL HERITAGE (within flood zone)

/ HOSPITAL	WASTE WATER TREATMENT PLANT	/ CULTURAL HERITANCE SITES
CLINICS-HEALTH UNITS	<10,000 . . .	INDUSTRIAL SITES
/ EDUCATION	10,000-100,000 . . .	/LANDFILL
/ FACILITIES	>100,000 . . .	/ DEVELOPED TOURIST AREAS
/ CULTURAL HERITANCE MONUMENTS	IPPC	/ DEVELOPED TOURIST AREAS
CIVIL PROTECTION FACILITIES	SEVESO	/ RICE CROP
LIVESTOCK HOLDINGS	IED	/ GREEN HOUSES
/ ENERGY STATIONS-	OTHER UNITS	CROPS
/ SMALL HYDROPOWER STATIONS (SHPP)	INDICATIVE AFFECTED POPULATION	PORT
WATER SUPPLY BOREHOLES-WATER SOURCES	< 500	=1000 FLOOD ZONE T=1000 YEARS
	500 - 2000	
	> 2000	
SC: IMPORTANCE	PROTECTED AREAS OF 2000/60/EC DIRECTIVE	/ SITE OF COMMUNITY IMPORTANCE AND SPECIAL PROTECTION AREAS
SPA: AREAS	SCISPA:	/ WATER SYSTEMS IDENTIFIED AS RECREATIONAL WATER
BOUNDARIES OF NEIGHBORING STATES	MAJOR NATIONAL ROAD NETWORK	
RIVER BASIN DISTRICT EL10	/SECONDARY - TERTIARY NATIONAL ROAD NETWORK	
OTHER RIVER BASIN DISTRICTS	MAJOR PROVINCIAL ROAD NETWORK	
/APSF	/ SECONDARY-TERTIARY PROVINCIAL ROAD NETWORK	
/ STREAMS	/ RAILWAY LINE	

0 2.5 km
GGRS 87 QUADRATURE PER 2.500 M.



&

1

μ μ (EL10)

1° - 7

=100 - EL10APSF008

SEA LEVEL RISE FLOOD RISK MAP FOR RETURN PERIOD T=100 YEARS - APSFR EL10APSF008

EL10-07-FRSF-100-025-40-4485-02	1:25.000
23-12-2023	2.0

/ &

NERCO -