



/LEGEND

LANDUSE - ECONOMIC ACTIVITIES - CULTURAL HERITAGE (within flood zone)

- HOSPITAL** (Red circle with cross)
- CLINICS-HEALTH UNITS** (Red circle with cross)
- EDUCATION** (Blue circle with book)
- SPORT** (Red circle with ball)
- CULTURAL HERITAGE MONUMENTS** (Yellow circle with monument)
- CIVIL PROTECTION FACILITIES** (Yellow circle with fire)
- LIVESTOCK HOLDINGS** (Yellow circle with cow)
- ENERGY STATIONS- STATIONS (SHP)** (Yellow circle with lightning)
- WASTE WATER TREATMENT PLANT** (Blue circle with water)
- INDUSTRIES** (Red circle with factory)
- IPPC** (Red circle with factory)
- SEVESO** (Red circle with factory)
- IED** (Red circle with bomb)
- OTHER UNITS** (Red circle with factory)
- INDICATIVE AFFECTED POPULATION**
 - < 500 (Pink circle)
 - 500 - 2000 (Pink circle with people)
 - > 2000 (Pink circle with people)
- HERITAGE SITES** (Yellow square with monument)
- INDUSTRIAL SITES** (Yellow square with factory)
- LANDFILL** (Green square with cross)
- AREAS / DEVELOPED TOURIST** (Yellow square)
- AREAS / DEVELOPING TOURIST** (Orange square)
- AREAS / RICE CROP** (Yellow square)
- AREAS / GREEN HOUSES** (Yellow square)
- CROPS** (Green square)
- PORT** (Blue square)
- FLOOD ZONE T=1000 YEARS** (Blue square)
- FLOOD ZONE T=10000 YEARS** (Blue square)

PROTECTED AREAS OF 2000/60/EC DIRECTIVE

- SCIP: IMPORTANCE** (Green dashed line)
- SCISPA: / SITE OF COMMUNITY IMPORTANCE AND SPECIAL PROTECTION AREAS** (Purple dashed line)
- SPA: AREAS** (Red dashed line)
- SPECIAL PROTECTION AS RECREATIONAL WATER** (Blue dashed line)

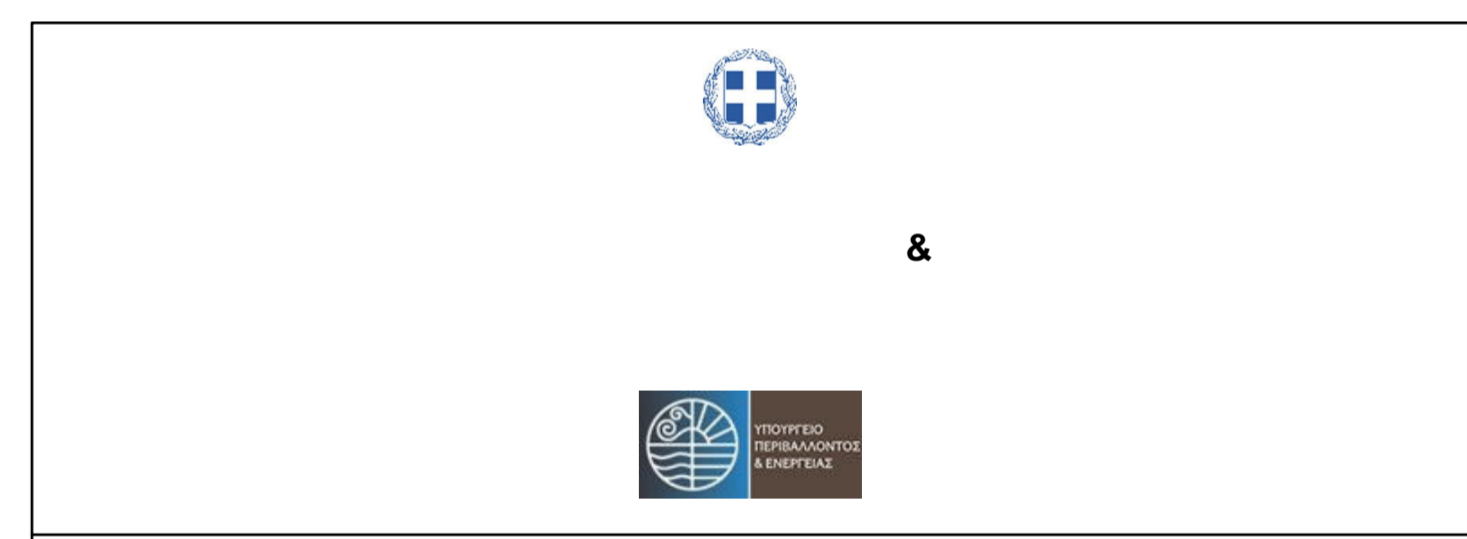
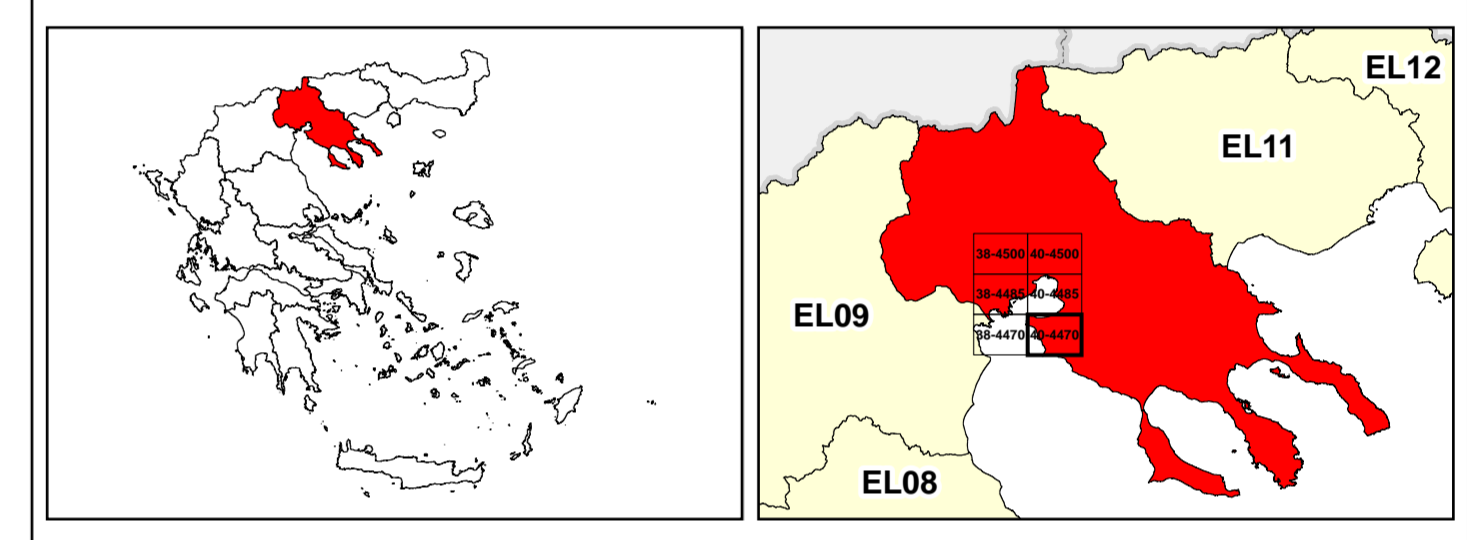
BOUNDARIES OF NEIGHBORING STATES

- RIVER BASIN DISTRICT EL10** (Black dashed line)
- OTHER RIVER BASIN DISTRICTS** (Black dashed line)
- APSF** (Red dashed line)
- STREAMS** (Blue line)

ROAD NETWORK

- MAJOR NATIONAL ROAD NETWORK** (Thick black line)
- SECONDARY - TERTIARY NATIONAL ROAD NETWORK** (Thin black line)
- MAJOR PROVINCIAL ROAD NETWORK** (Red line)
- SECONDARY-TERTIARY PROVINCIAL ROAD NETWORK** (Dashed red line)
- RAILWAY LINE** (Black line with cross-ticks)

0 87 2.500 km
GGRS 87 QUADRATURE PER 2.500 M.



1

μ μ (EL10)

1° - 7

=100 - EL10APSF008

SEA LEVEL RISE FLOOD RISK MAP FOR RETURN PERIOD T=100 YEARS - APSFR EL10APSF008

EL10-07-FRSF-100-025-40-4470-02	1:25.000
23-12-2023	2.0

/ &

NERCO -

μ μ