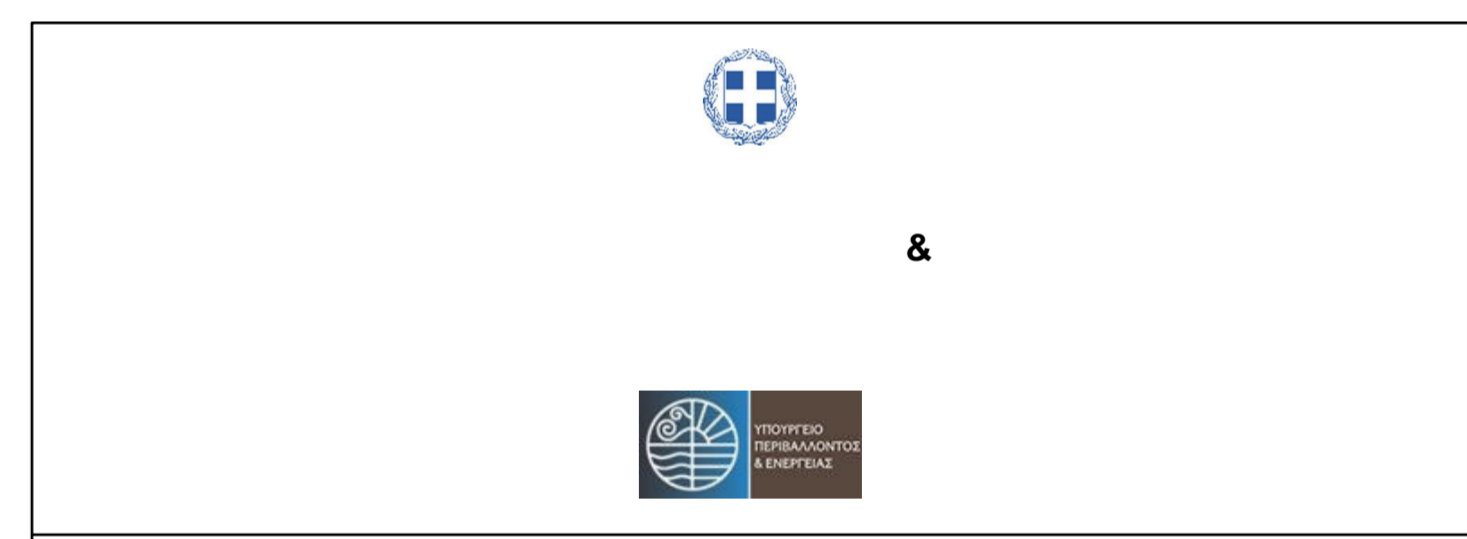
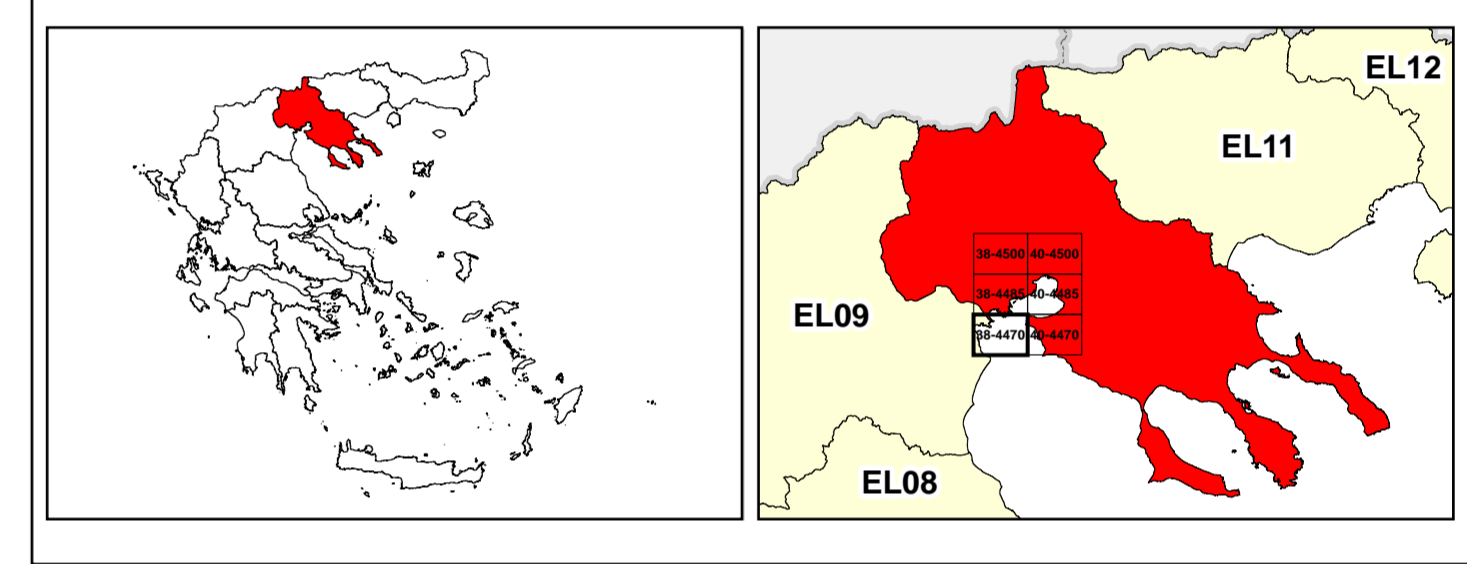


/LEGEND

LANDUSE - ECONOMIC ACTIVITIES - CULTURAL HERITAGE (within flood zone)

	/ HOSPITAL		/ WASTE WATER TREATMENT PLANT		/ CULTURAL HERITANCE SITES
	/ CLINICS-HEALTH UNITS		10,000-100,000		/ INDUSTRIAL SITES
	/ EDUCATION	>100,000 population icon"/>	>100,000		/ LANDFILL
	/ FACILITIES		/ IPPC		/ DEVELOPED TOURIST AREAS
	/ CULTURAL HERITANCE MONUMENTS		/ SEVESO		/ DEVELOPING TOURIST AREAS
	/ CIVIL PROTECTION FACILITIES		/ IED		/ RICE CROP
	/ LIVESTOCK HOLDINGS		/ OTHER UNITS		/ GREEN HOUSES
	/ ENERGY STATIONS		< 500		/ CROPS
	/ SMALL HYDROPOWER STATIONS (SHP)		500 - 2000		/ PORT
	/ WATER SUPPLY BOREHOLES-WATER SOURCES		> 2000		/ FLOOD ZONE T=1000 YEARS
	/ SC: IMPORTANCE		/ PROTECTED AREAS OF 2000/60/EC DIRECTIVE		/ SITE OF COMMUNITY IMPORTANCE AND SPECIAL PROTECTION AREAS
	/ SPA: AREAS		/ SPECIAL PROTECTION AREAS		/ WATER SYSTEMS IDENTIFIED AS RECREATIONAL WATER
	/ BOUNDARIES OF NEIGHBORING STATES		/ ROAD NETWORK		/ MAJOR NATIONAL ROAD NETWORK
	/ RIVER BASIN DISTRICT EL10		/ SECONDARY - TERTIARY NATIONAL ROAD NETWORK		/ MAJOR PROVINCIAL ROAD NETWORK
	/ OTHER RIVER BASIN DISTRICTS		/ SECONDARY-TERTIARY PROVINCIAL ROAD NETWORK		/ RAILWAY LINE
	/ STREAMS				

0 1 2 3 km
GGRS 87 QUADRATURE PER 2.500 M.



1

μ μ (EL10)

1° - 7

=100 - EL10APSFR008

SEA LEVEL RISE FLOOD RISK MAP FOR RETURN PERIOD T=100 YEARS - APSFR EL10APSFR008

EL10-07-FRSF-100-025-38-4470-02	1:25.000
23-12-2023	2.0

/ &

NERCO -